



Communities
In Schools®

San Antonio

2025 IMPACT REPORT

September 2024 – August 2025

♥ BEING
PRESENT
MATTERS!



A MESSAGE FROM OUR CEO & BOARD CHAIR

Dear Friends,

Thanks to your unwavering support, Communities In Schools of San Antonio reached new heights in 2024–2025. Together, we turned obstacles into opportunities and empowered thousands of students to stay in school and thrive in life.

This year, our dedicated team walked alongside students across **145 schools in 12 districts and 5 counties**—providing individualized support in academics, attendance, mental health, and college and career readiness. Every success story is a testament to the power of relationships and the belief that **every child deserves a champion**.

OUR IMPACT AT A GLANCE (ISS MODEL):

- **11,187 students** received wraparound services tailored to their needs.
- **100% stayed in school**, and **97% of eligible seniors graduated**.
- **130,424 hours** of direct services delivered to help students overcome barriers.

Inside this Impact Report, you'll discover inspiring highlights, including:

- **Project AWARE** launched in 2023 at East Central ISD, expanding access to school-based mental health services and promoting awareness, early intervention, and resilience.
- **Future Ready Program** a city-wide strategy centered on Healing, Access, and Voice—strengthening campuses and equipping students for life beyond the classroom. This initiative supports the Future Ready Bexar County Plan, a shared commitment to ensure that by 2030, 70% of high school graduates enroll in a degree or credential program—building a stronger future for all.

These initiatives—and every success story—are possible because of you. Your belief in our mission transforms challenges into opportunities and dreams into reality.

Your commitment fuels this work. Together, we're creating a stronger, more resilient future for every student in San Antonio and beyond. Thank you for standing with us—and for continuing to champion every child's success.

With heartfelt appreciation,

Jessica Weaver
President & CEO
CIS-SA



Yvonne Kuykendall
Board Chair
CIS-SA



MISSION:

Surround students with a **community** of support empowering them to stay in school and achieve in life

VISION:

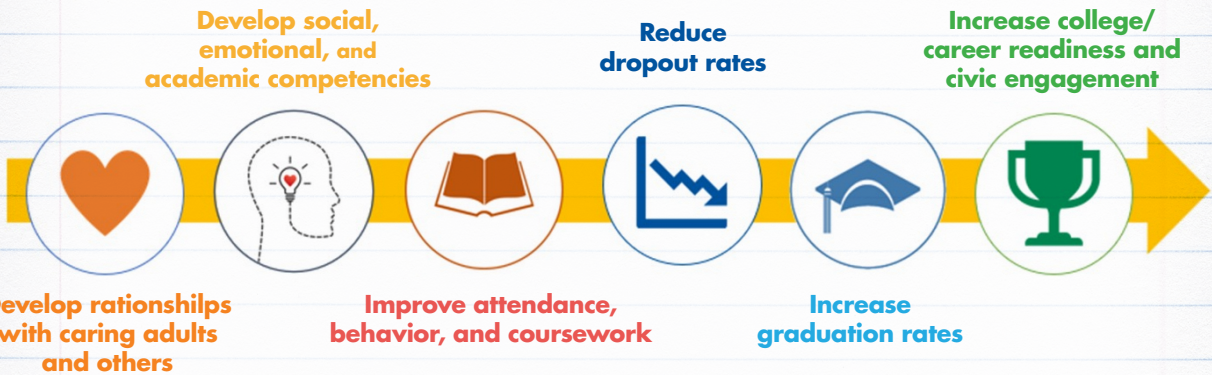
Giving **Hope** and **Transforming Lives**



We are **1 of 103 affiliates in the country of Communities In Schools**, the nation's largest and most effective organization dedicated to keeping kids in school and helping them succeed in life.

Through our **Integrated Student Supports (ISS) model**, we surround students with a community of support, addressing both academic and non-academic barriers to success. We are also the **largest provider of mental health support in schools**, ensuring students have access to critical resources that promote well-being and resilience.

Our **Theory of Change** is simple yet powerful: when students' basic needs are met and they feel supported, they can focus on learning, graduate, and achieve their full potential.



We partner with local businesses, social service agencies, healthcare providers, and volunteers. Whether it's food, school supplies, health care, counseling, academic assistance, or a positive role model, Communities In Schools of San Antonio is there to help.

2024-2025 BOARD MEMBERS



BOARD CHAIR:
Yvonne Kuykendall
University Health Foundation

VICE CHAIR:
Jacob Cavazos
Broadway Bank

TREASURER:
Brent Mora
Generations Federal Credit Union

SECRETARY:
William "Bill" Schneider
Las Aguilas

Dr. Barry Abrams
Community Volunteer

Chad Madison
H-E-B Grocery

Joe Jesse Sanchez
Community Volunteer

Antonisha J. Bennett
All Heart Initiative

Danielle Montes
City of Boerne

William "Cruz" Shaw
436th Juvenile District Court
Bexar County

Debbie Broemsen
Frost Bank

Dr. Linda Mora
UTSA

Stan Tebbe
Community Volunteer

Jennifer Dooling
Bank of America

John Norman
Norman Consulting, LLC

Ron Thomas
Community Volunteer

Dr. H. Rad Eanes
Community Volunteer

Daniel "Dan" Petro
Oxbow Development Group

Dr. Juan Valdez
Methodist Healthcare System

Araceli Garcia
Atascosa Area Advocates
CIS-SA Alumna

Julie Puchot
H-E-B Grocery

Dr. Jeannie Von Stultz
Bexar County
Juvenile Probation

Michelle Lugalía-Hollon
Alamo Colleges District

Zandra Pulis
CAPTRUST

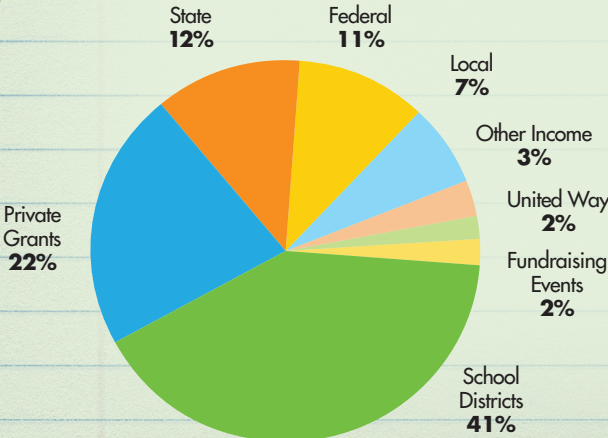
Jessica Weaver
President & CEO,
Communities In Schools
of San Antonio

Dr. Adriana Rocha Garcia
City of San Antonio

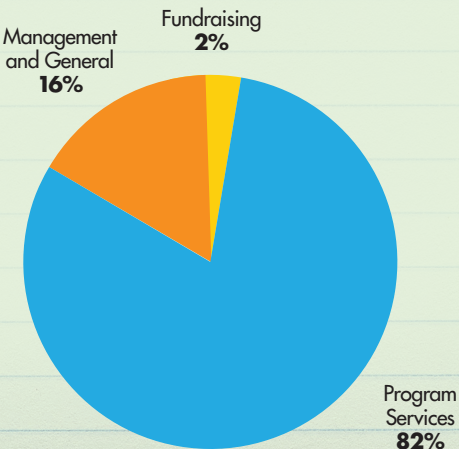
Our Finances

Communities In Schools of San Antonio demonstrates a true public/private partnership. CIS-SA's total revenue comes from state, federal and local government grants, the various school districts that we support, United Way as well as the generosity of foundations, corporations, and individual donors.

Revenue
\$23,403,829



Expenses
\$23,403,829



CIS-SA has **strong fiscal responsibility**, with more than **90 cents** of every dollar going directly to program services.

CIS-SA has received a **Platinum Seal of Transparency** from Candid.

Platinum Transparency 2025
Candid.



THANK YOU For Your Support!

The generosity, passion, and commitment of our supporters make our work possible. We are grateful to all the individual donors, organizations, and foundations that help fund our mission—allowing us to serve students and families across San Antonio and the surrounding areas.

Below is a list of generous organizations that supported us during the 2024-2025 school year with a gift of \$25,000 or more.



Below is a list of generous organizations that supported us during the 2024-2025 school year with a gift ranging from \$1,000-\$24,999

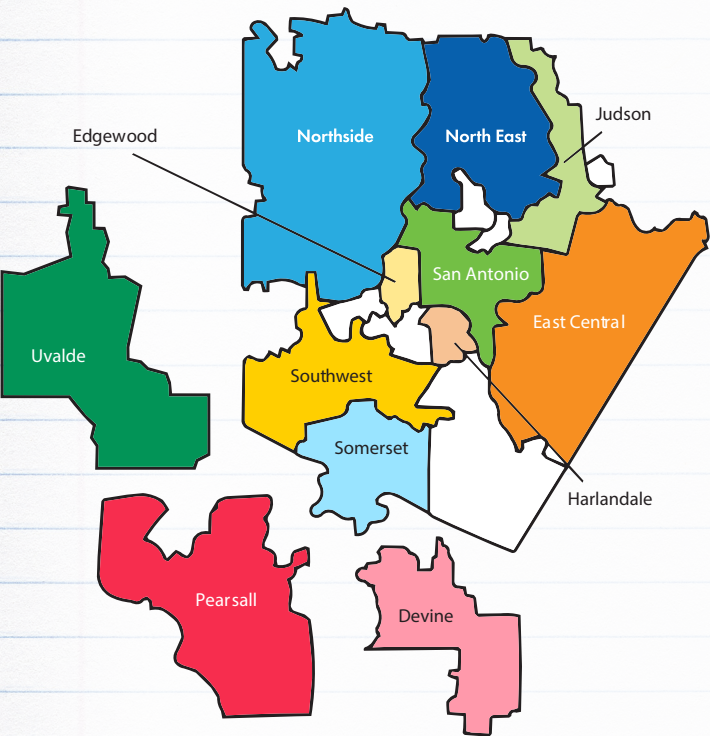
- | | | |
|---|---|--|
| • Acuform Architecture | • Generations Federal Credit Union | • Schriver, Carmona & Company, PLLC |
| • Alamo Colleges | • H.E. Butt Foundation | • Shield-Ayres Foundation |
| • All-American Allergy, Asthma & Immunology Center | • Hambisana IT LLC | • Silver Eagle Beverages |
| • Amarillo National Bank | • HUB International | • South State Bank |
| • Ameritas Group | • IBC Bank | • SPD Construction – Build Them Up Foundation |
| • Andy Mireles Charitable Foundation | • JAB Trading Industries | • St. Luke's Lutheran Health Ministries |
| • Bexar County Office of Judge Peter Sakai | • Jefferson Bank | • St. Mark's Episcopal Church |
| • Blue Cross Blue Shield of Texas | • Jordan Ford | • Stagg Restaurants, LLC / McDonald's |
| • Broadway Bank | • Kilpatrick Memorial | • Steve & Susan Brauer Family Giving Fund |
| • Children's Bereavement Center of South Texas | • King William Association | • Talk About It Texas (Healthy Futures) |
| • Christ Gospel Holiness Church Inc | • Kirkland & Ellis LLP | • Talk Strategy |
| • City of San Antonio- Department of Human Services | • Las Aguilas | • TEGNA Foundation (KENS-5) |
| • Coldwell Banker D'Ann Harper, Realtors | • Laurel Ridge Treatment Center | • Texas Capital Bank |
| • Contractors Helping Kids | • Lowe Foundation | • The Brunch Spot TX LLC |
| • Cowden Charitable Foundation | • Lundy & Franke Engineering, Inc. | • The CE Group |
| • CPS Energy | • Marsh McLennan Agency | • The Center for Health Care Services Foundation |
| • Davis Law Firm | • Mathis Consulting Services, Inc | • The Children's Bereavement Center of South Texas |
| • Elliot Pride Family Foundation | • MedCognition | • The Ckp Group |
| • Enterprise Mobility Foundation | • Methodist Healthcare System | • The Herrera Law Firm |
| • Family Service Association | • Myra Stafford Pryor Charitable Trust | • Tisdale, LLC |
| • Firstmark Credit Union | • Northside Lions Charitable Foundation | • Toyota |
| • Friends of CIS-SA | • Office of Commissioner Moody | • UP Partnership |
| • Frost Bank | • Perry Homes | • Western Dental (Brident) |
| | • Port San Antonio | • Whataburger |
| | • Restore Biomedical LLC | |
| | • RSM | |
| | • San Antonio Auto Title Services Inc | |
| | • Scholastic | |

Where We Serve



2024-2025 CIS-SA PROGRAM SITES

We serve over **245** schools across **12** districts in San Antonio and surrounding areas, providing tailored support—some schools received our ISS model, others focused on mental health services, and many benefited from both.



EDUCATION LEVEL

Early Childhood Center	2	Middle Schools	51
Elementary Schools	126	High Schools	49
Academies	17		

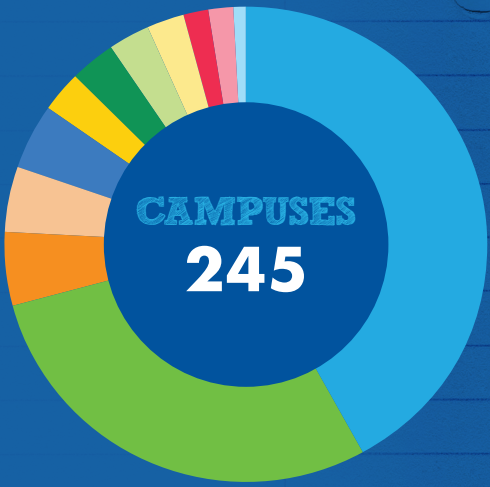
OTHER PROGRAMS SERVED

- Bexar County Juvenile Justice Academy
- Bexar County Specialty Courts
- Haven for Hope
- NXT Level Re-Engagement Center North
- NXT Level Re-Engagement Center West
- Palo Alto College



SCHOOL DISTRICT PARTNERS

Devine ISD	4
East Central ISD	12
Edgewood ISD	6
Harlandale ISD	11
Judson ISD	7
North East ISD	11
Northside ISD	103
Pearsall ISD	4
San Antonio ISD	71
Somerset ISD	2
Southwest ISD	7
Uvalde CISD	7



How We Serve

Our Services Support Six Targeted Needs



Academic

From connecting students with tutors to providing homework help and motivation, our Site Coordinators spent **15,833 hours** doing whatever it took to ensure every student had an optimal learning environment.



Attendance

With personalized support and strong relationships, our staff tackled the root causes of absenteeism. Working with schools, students, and families, we provided **10,338 services** to remove barriers and improve attendance.



College and Career Readiness

Through academic support, guidance, and career-focused experiences, we helped **3,427 students** prepare for college, careers, and successful post-secondary transitions.



Family Engagement

Our Site Coordinators connected **4,378 families** with counselors and social workers to help ensure students had secure, healthy, and nurturing home environments.



Mental and Behavioral Health

Through one-on-one workshops, clinical sessions, small groups, and guest speakers, we spent over **55,497 hours** providing **110,735 services** that helped students build emotional regulation, character, social skills, and conflict-resolution skills.



Social Services

Students learn best when their basic needs are met. From hunger to vision challenges, our Site Coordinators made sure **6,381 students** had the essentials they needed to focus and thrive.



Data based on 11,187 case-managed students during the 2024-2025 school year.



Our Impact

138,284

students, teachers, or community members received CIS-SA services

90,465

students received CIS-SA support through school-wide initiatives

11,187

case-managed students received 130,424 direct service hours

145

schools across 12 districts received dedicated support through our ISS model

100%

stayed in school

91%

improved in academics, behavior, and/or attendance

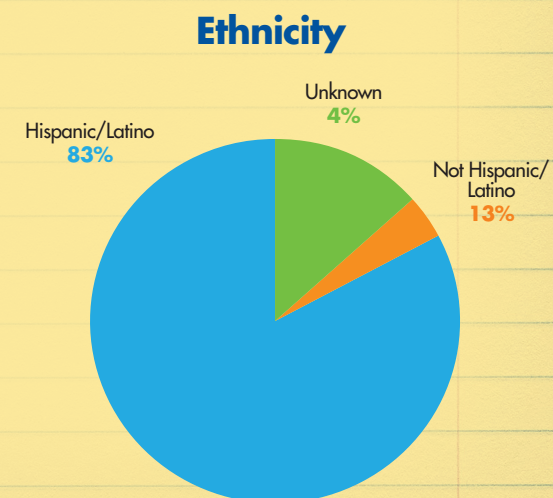
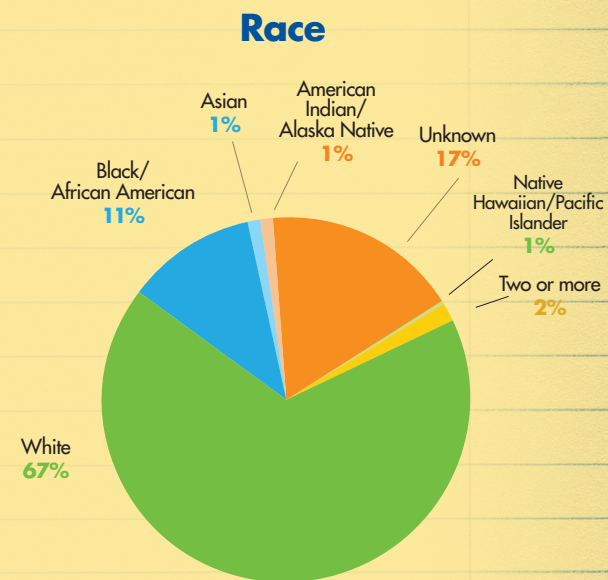
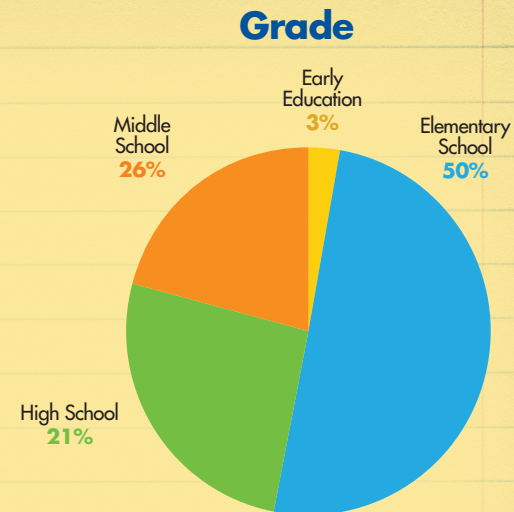
98%

were promoted to the next grade

97%

of eligible seniors graduated

Who We Serve



All percentages reflect the results of our 11,187 case-managed students.

PROJECT EC AWARE: ADVANCING WELLNESS & RESILIENCY IN EDUCATION

Overview

Project EC AWARE—a five-year collaboration between CIS-SA, ECISD, UTSA, and ESC Region 20, supported by TEA and Texas Health and Human Services—launched in 2023 to **expand access to school-based mental health services** through MTSS, ensuring timely and accessible care for all students.

CIS-SA, funded by the AWARE grant, is partnering with ECISD to strengthen a trauma-informed, multi-tiered system of support aligned with the EC Cares initiative, promoting mental health awareness, early intervention, and resilience by addressing the whole child.

Impact

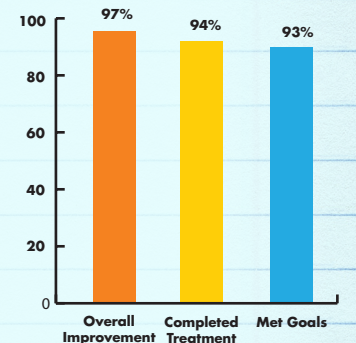
2,069 counseling sessions
(1,868 student, 201 parent)

4,293 total support services delivered

879 case-managed students

1,833 individuals attended mental health trainings

Success Rates



The outcomes speak for themselves: **ECISD set a new record for distinctions in 2025, earning 20 designations across campuses and ranking among the top three districts in Texas for academic gains.** AWARE's contributions, supported the growing capacity and readiness that this partnership helps build.

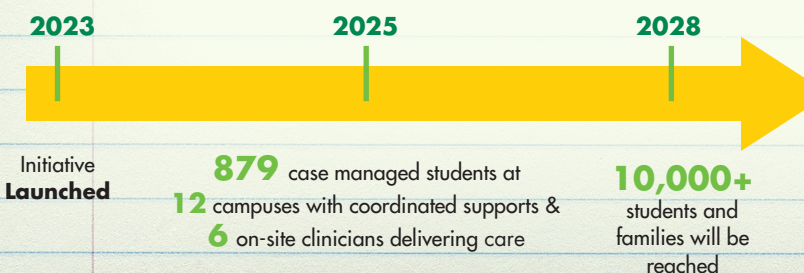
66

"Access to clinicians can be life-changing for students. This added layer of support helps ECISD deliver the right help at the right time—and sustain it. When students' basic needs are met, they're ready to learn, and teachers can focus on teaching. When teachers can teach, students **will** learn."

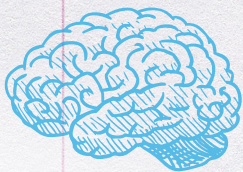
– Superintendent Roland Toscano

This reinforces our **Theory of Change**: when students' basic needs are met, and they feel supported, they can focus on learning, graduate, and achieve their full potential.

Looking Ahead



Providing School-Based Mental Health Services



Every student deserves mental health support before challenges become crises. Communities In Schools is Texas’ largest provider of campus-based behavioral health services. Our licensed clinicians deliver care directly in schools, ensuring students receive help when they need it most—so they can thrive in class and in life. **Learn more about our services below.**



Project Access

Project Access provides short-term, intensive counseling directly on campus—removing barriers like cost, transportation, and time for families. This year, the program delivered **6,289** counseling sessions to CIS-SA case-managed students and their families through 8–10 weekly sessions. In partnership with SAISD, Jewish Family Services, and the Children’s Bereavement Center, licensed clinicians were placed in every SAISD middle and high school, providing over **3,205** one-on-one counseling sessions to ensure students have access to vital mental health support.



SEEDS

A collaborative initiative between CIS-SA, NISD, Children’s Bereavement Center, Jewish Family Services, Family Services, and the Hope Center. The SEEDS team comprises licensed professional counselors, licensed master social workers, and intake coordinators who provide mental health and supportive services to case-managed students in NISD. According to a self-report assessment, **96%** of students saw improvement.



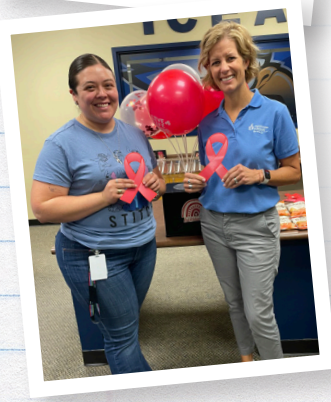
Domestic Violence Programs

In collaboration with the San Antonio Metropolitan Health District and Bexar County, we provided counseling and mental health support to students and families affected by domestic violence across JISD, NISD, NEISD, SAISD, and SISD. During the 2024–25 school year, participating students reported an average of over **89%** improvement.



Metro Health Teen Parenting Program

In partnership with the San Antonio Metropolitan Health District, we provided counseling and mental health support to pregnant and parenting teens across NISD, EISD, SAISD, SISD, and SWISD. In the 2024–25 school year, the program delivered **865** counseling sessions and **1,159** supportive services to young parents.



Parent and Child Emotional Wellness Program (PACE)

We provided mental health services to **119** Head Start students and their families by licensed counselors and social workers. This program promoted the school readiness of preschool-aged children and their families in SAISD.



Our Impact

16,590

mental health counseling sessions were completed by 1,562 students

219

Schools received mental health support across 12 school districts

83%

of parents received at least one session

87%

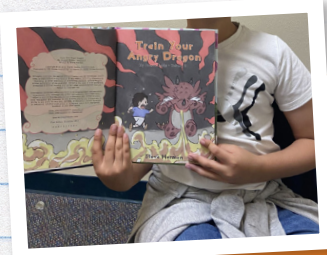
of students met their counseling goals

92%

overall student improvement

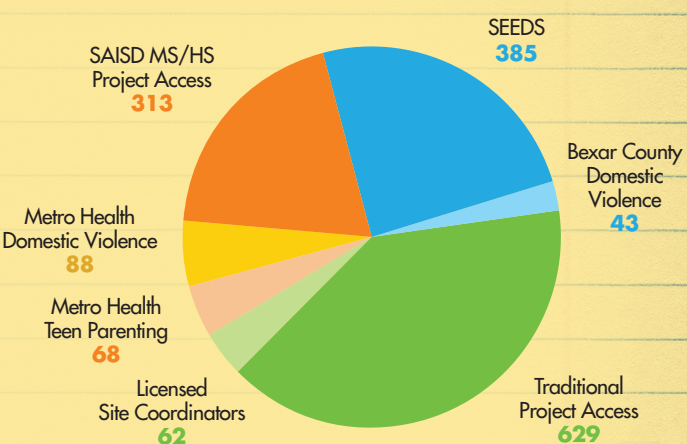
84%

of students completed their treatment plan



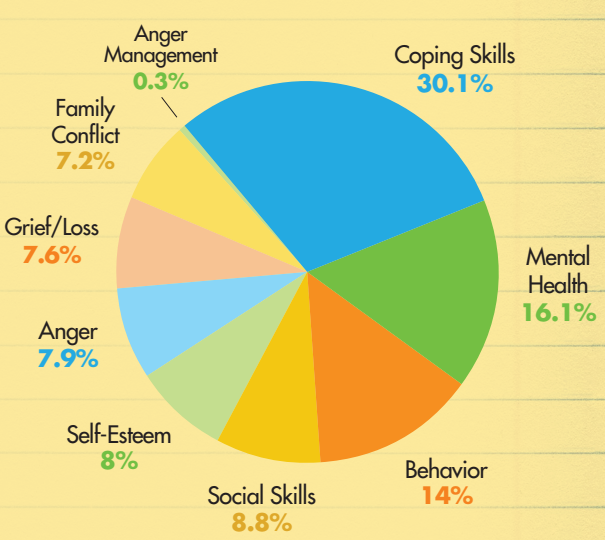
Mental Health Outcomes

Students Served by Program



* Some students benefited from multiple program services

Student Identified Need



Impact Story!

This student is energetic and talkative with a passion for Legos, sci-fi, and art. He was referred to the SEEDS program by his school counselor after his mother shared concerns about **problems at school** and negative feelings he was experiencing. Since then, he has been receiving weekly counseling, and he and his **CIS-SA Clinician** have maintained close communication with his school counselor, teacher, and parents to ensure any incidents **at school** are promptly addressed. Thanks to increased awareness and proactive efforts, **his experience at school has improved**, and his teacher is monitoring interactions closely.

“His parents have noticed positive changes, reporting that he is in a better mood, listening more, and arriving to school on time with fewer tardies. He always looks forward to our counseling sessions and eagerly participates in the activities we do together. I’ve also observed that he seems more at ease and authentic in expressing himself, which I hope reflects growing confidence,” said his CIS-SA Clinician.

SURROUNDING STUDENTS WITH A COMMUNITY OF SUPPORT

We couldn't do the work we do in schools without the help of our partners and volunteers

AmeriCorps

Funded by the OneStar Grant, the CIS-SA AmeriCorps program offers university students pursuing careers in social work, counseling, and related fields the opportunity to provide personalized support to 6-12 case-managed students. As AmeriCorps Members, participants gain hands-on experience with at-risk students in a school setting, benefitting from supervision by qualified mentors and a comprehensive training program designed to develop culturally sensitive social service professionals. This rewarding experience allows AmeriCorps Members to make a meaningful impact in student's lives and equips them with skills like critical thinking and problem-solving.

67 AmeriCorps Members

34 schools and **8** clinical programs supported by AmeriCorps Members

677 students received wrap-around support services from AmeriCorps Members

89% demonstrated improvement in their mental and behavioral health

3,975.75 hours dedicated to enhancing our organization's capacity

5 AmeriCorps Members graduated and became full-time CIS-SA staff



139 Community Partners

By fostering a thriving, connected community, our shared work ensures that every child has the opportunity to succeed both inside and outside the classroom.

60 Nonprofit Partners

19 Social Service Organizations

29 Business and Corporate Partners

31 Additional Community Partners



Scan the QR code to see a full list of our partners!

802 Volunteers

Made a difference in the lives of our students by participating in either a one-time or ongoing volunteer opportunity.

3 University Partners

44 Pen Pals

15 Community Mentors

419 Stuff The Bus Volunteers

219 Reading Day Volunteers

102 Tutors



Friends of CIS-SA

The Friends of Communities In Schools of San Antonio (CIS-SA) is a group of community members with a shared passion for supporting and empowering students to graduate and achieve in life. Established in 2009 in response to an alarming news article that stated San Antonio was becoming a dropout factory, a group of passionate CIS-SA supporters said, "Not on our watch" and established the Friends of CIS-SA membership program.

Friends of CIS-SA support by:

- Serving as ambassadors for CIS-SA by spreading the word about our cause.
- Participating in volunteer opportunities to make a direct & indirect impact on students.
- Connecting CIS-SA with other organizations and companies that are mission-aligned to create potential partnerships.
- Paying membership dues to support student enrichment programming.

2024-2025 Impact

Friends funded **35** off-campus enrichment field trips for **633** students. For many students, this was their first experience at a museum, filled with art, science, nature, and culture. Enrichment Partners Include:

- San Antonio Art Museum
- San Antonio Botanical Gardens
- McNay Art Museum
- Witte Museum (new partnership!)

Volunteer Engagement

- **Pen Pal Program:** Friends exchanged letters with students from two NISD campuses, offering ongoing encouragement and connection.
- **National Reading Day:** Friends and volunteers read aloud at Passmore Elementary School, sparking joy through storytelling.
- **Friends Care:** Students at Gilbert Elementary School received **20** **Thanksgiving baskets**, winter hats and scarves, and **66** **summer enrichment** care packages that included toys and tools for outdoor play and art.



240 InspireU Mentors

From **12** businesses served **407** high school students around San Antonio, creating one-on-one relationships through a mentorship program that includes exploration of real workplace environments and engaging in activities that prepare them for their future careers.

5,951
Mentoring Hours



InspireU Partners

AT&T
Bank of America
Broadway Bank
Chase

CPS Energy
H-E-B Grocery
Jefferson Bank
KENS 5

The Hartford
USAA
UTSA
Valero



Participating Schools

Brackenridge High School
Burbank High School
Edison High School
Harlandale High School
Highlands High School
Holmes High School
Jefferson High School

John Jay High School
Lanier High School
McCollum High School
Memorial High School
Sam Houston High School
Southwest High School
Wagner High School

45 STEM Family Nights

6094 students and families participated in STEM Family Nights across **5** school districts. Funded by VelocityTX, these interactive educational events provided opportunities for hands-on academic engagement and enhanced family involvement for elementary and middle school students. In addition, we facilitated **13** science workshops and **5** careers days for SAISD students who designed and built robotic hand prototypes, extracted their own DNA, and met local STEM professionals.



To learn more, visit cissa.org/get-involved/friends.

FUTURE READY PROGRAM: Building a Community of Support



Since its inception, the CIS-SA Future Ready Program has grown from a pilot in NISD and ECISD into a citywide strategy that surrounds students with a community of support—helping them stay in school and thrive. This work aligns with the Future Ready Bexar County Plan, a shared commitment to ensure that by 2030, 70% of high school graduates enroll in a degree or credential program—building a stronger future for all.

This model, layered onto our traditional approach, provides campuses with targeted assistance in three critical areas:

Healing – Promotes trauma-informed practices and emotional wellness through campus and community partnerships.

Access – Connects students and families to essential post-secondary resources that meet immediate and long-term needs.

Voice – Empowers students and families by amplifying lived experiences and facilitating collaboration that influences school culture and programming.

At the heart of this work are **Community Specialists** who work alongside school and district staff to identify needs, connect resources, and strengthen networks for families and educators. **Their role complements Site Coordinators** by building campus capacity, so Coordinators can focus on individualized student support. Together, they expand the reach of support systems, maximize resources, and create relationships that sustain campuses—ensuring every child feels seen, supported, and valued.



Our Impact

3 school districts served during 2024-2025:
ECISD, HISD, and NISD

53 campuses across five districts will be served by 2025–2026, (NISD, SWISD, ECISD, HISD, and CAST Network), with a long-term vision to include all seven Future Ready Districts.

214 events hosted

139 community partners engaged



Each year, **Community Specialists** connect hundreds of students and families to vital supports, strengthen school-community partnerships, and reduce burdens on educators by coordinating resources and engagement.



ALL IN for Kids

Our signature annual events unite the community to advance our mission.

Equipping Students with School Supplies

Thanks to our **140+** partners who spent their summer collecting supplies/raising funds for our kids, to our donors who gave generously, and to our community and volunteers for supporting our live drive at H-E-B Grocery stores on Stuff The Bus Day. Collectively, we raised over **\$521,000** in funding and in-kind gifts to ensure that all students' backpacks were stuffed with the tools they needed to start the school year off right. Extra school supplies are also kept in the Site Coordinators' offices to access all school year for any student on campus. A big thank you to our sponsors H-E-B Grocery, KENS5, and iHeart Media!



WHOLE CHILD WHOLE COMMUNITY CONFERENCE

On November 15, 2024, non-profit leaders, youth development professionals, educators, counselors, and community leaders gathered for the annual Whole Child Whole Community Conference hosted by CIS-SA. Over **200** participants learned how to build a stronger network of support for our youth, sharing the spark to ignite our community to thrive. Congratulations to our **All In For Kids** Award winners: Ms. Diaz, Ms. Scott, and Ms. Huerta (Educator), Christina Martinez (Civil Servant), H-E-B Grocery (Company) and Lea Rosenauer (Community Leader).

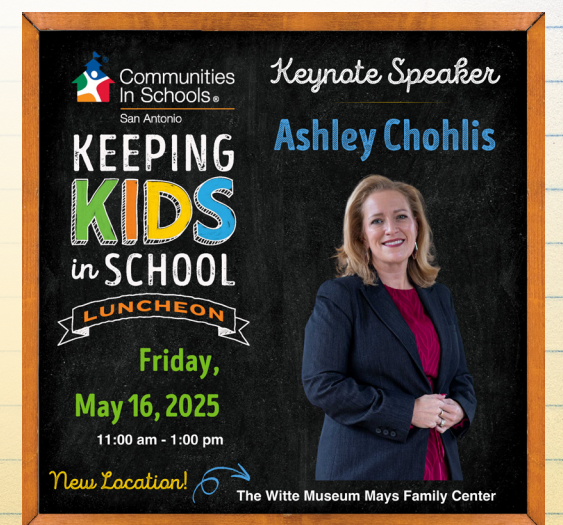


Keeping Kids in School Luncheon

The Keeping Kids In School luncheon is one of CIS-SA's largest fundraising events that brings together our community of support to celebrate student success. This event was held on May 15, 2025, bringing in over **\$127,000** to support our mission. A special thank you to our keynote speaker, UCISD Superintendent Ashley Cholis, for her inspiring remarks, premier sponsors H.E. Butt Foundation and DOCUmentation, and all sponsors who supported this event. **Save The Date: The Reunion Gala: Celebrating 40 Years of Champions Thursday, May 21, 2026 at The Tobin for Performing Arts.**



Scan the QR code to learn more



66 Community Voices

"Our CIS team is amazing. They are part of our school family and we use them every day."

"Definitely taken a lot of stress off my shoulders because I was spending several hours a week trying to enlist partners."

"Community Specialists play a key role in supporting district priorities by strengthening school-community partnerships."

*Feedback provided by anonymous Future Ready partners.



SCAN ME
to visit our website



**Communities
In Schools®**

San Antonio

We appreciate your support!

To learn more about our students please visit

www.cissa.org
(210) 520-8440



1045 Cheever Blvd. Suite 201, San Antonio, TX 78217