

At A Glance

Our Mission

We surround students with a community of support, empowering them to succeed in school and achieve in life.

Why It's Important

According to The Texas Education Agency (TEA), **300,292** of Bexar County public school students live in **poverty** and face challenges outside the classroom like **hunger, access to counseling, and other barriers, which stand in the way of success inside the classroom.**

Impact

99% stayed in school

88% improved in academics, behavior, and/or attendance

98% of eligible seniors graduated

98% were promoted to the next grade

percentages reflect the results of our 23-24 school year

How We Do It

Our proven model places dedicated Site Coordinators and Licensed Counselors directly on **120+** PreK-12 campuses to identify barriers and deliver personalized, **wraparound support**. During the 2023-2024 school year, we walked alongside more than **11,800 students and their families**, connecting them to essential resources, including food, school supplies, healthcare, mental health services, academic support, and caring mentors.

Through powerful partnerships with local businesses, social service agencies, healthcare providers, and volunteers, **CIS-SA surrounds students with a community of support**, so they can stay in school and succeed in life.



Learn more about
our work at
www.cissa.org

[CISSanAntonio](https://twitter.com/CISSanAntonio)

[CISSanAntonio](https://www.facebook.com/CISSanAntonio)

[cis_sanantonio](https://www.instagram.com/cis_sanantonio)

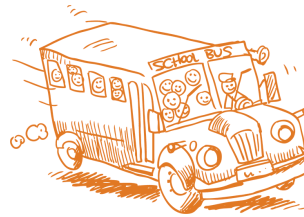
[Communities In Schools of San Antonio](https://www.linkedin.com/company/communities-in-schools-of-san-antonio)

OUR SERVICES SUPPORT 6 TARGETED NEEDS



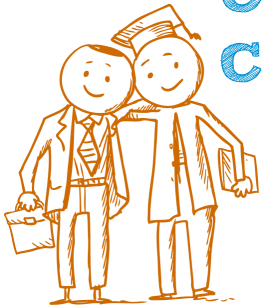
Academic

- One-on-one tutoring
- Study skills
- Reading days



Attendance

- Attendance incentives
- Morning groups
- Transportation
- Parent conferences



College and Career Readiness

- Career days
- Job shadows
- Post-secondary planning
- Workplace mentoring
- Skills training



Family Engagement

- Family nights
- Health and wellness classes
- Home visits
- Basic needs support



Mental and Behavioral Health

- Individual counseling
- Small group activities
- Goal setting and life skills
- Emotion regulation techniques



Social Services

- School supplies
- Clothes/uniforms
- Food
- Hygiene items



Communities In Schools (CIS) has become the nation's largest and most effective dropout prevention organization and the only one proven to both decrease dropout rates and increase graduation rates. CIS is also recognized with best practice designation by the TEA and Health and Human Services Commission for its early mental health intervention practices.



Scan the QR code to contact us for more information!