



Communities  
In Schools®

San Antonio

# 2023 IMPACT REPORT

September 2022 – August 2023

**BUILDING  
BRIGHTER  
FUTURES  
FOR  
STUDENTS**







# A Message from our CEO

Dear Friends,  
During the 2022-2023 school year, Communities In Schools of San Antonio (CIS-SA) maintained its growth since the pandemic, providing deeper services for our students as we met their needs. Your investment in our kids has allowed us to continue **building connections**, providing much-needed access to wrap-around support and mental health services.

Supporting over **200** schools across **13** school districts in San Antonio and the surrounding area, our school-based and clinical teams ensured students were connected to caring adults and necessary services. They also brought community resources directly to their schools to help students take on and **tear down the barriers that stood between them and a brighter future.**

In addition to support services, CIS-SA continues to build a community that focuses on the whole child and their needs. **We bring people together to meet students where they are at, in the schools.** Our Site Coordinators are the trusted and caring adults students need to help them manage today's complexities.

**We invite you to learn about the impact you helped us achieve in the 2022-2023 school year, where we focused on:**

- **Serving 134,684 students, teachers, and community members,**
- **Supporting our youth beyond school walls,**
- **Increasing the number of CIS-SA team members in specialized roles to further support students,**
- **And MUCH MORE!**



CIS-SA is grateful to our community partners, both public and private, who understand our work in schools and beyond school walls. **You continue to be our greatest asset.** We know that to ensure kids have access to educational resources, we must be innovative with our approach.

We want to thank friends like you who consistently support our work. Because of you, we ensure that **students and their families are connected to resources, feel a sense of belongingness, and are helped to heal and become their best selves.** We appreciate you for trusting Communities In Schools of San Antonio and helping us to create sustainable programs for the whole child, and whole community.

With gratitude,

*Jessica Weaver*

Jessica Weaver  
President & Chief Executive Officer  
Communities In Schools of San Antonio



# 2022-2023 Board Members



**BOARD CHAIR:**  
**Zandra Pulis**  
CAPTRUST

**VICE CHAIR:**  
**Yvonne Kuykendall**  
Educational Testing Service (ETS)

**INTERIM TREASURER:**  
**Marc Sewell**  
RSM US LLP

**SECRETARY:**  
**Jacob Cavazos**  
Broadway Bank

**Dr. Barry Abrams**  
Community Volunteer

**Velma L. Guerra**  
CAPTRUST

**Joe Jesse Sanchez**  
Community Volunteer

**Demonte Alexander**  
DOCumation

**Haven Jackson**  
Chase Bank

**William "Bill" Schneider**  
Community Volunteer

**Antonisha Bennett**  
All Heart Initiative

**Chad Madison**  
H-E-B Grocery

**William "Cruz" Shaw**  
Bexar County

**Jennifer Dooling**  
Bank of America

**Dr. Alexander L. Miller, M.D.**  
Community Volunteer

**Stan Tebbe**  
Community Volunteer

**Katherine Doss**  
Palo Alto Community College

**Brent Mora**  
Generations Federal Credit Union

**Matthew Thibodeaux**  
Valero

**Dr. H. Rad Eanes**  
Community Leader

**Dr. Linda Mora**  
UTSA

**Ron Thomas**  
Community Volunteer

**Dr. Adriana Rocha Garcia**  
Our Lady of the Lake University

**John Norman**  
San Antonio ISD

**Dr. Jeannie Von Stultz**  
Bexar County Juvenile Probation

**Araceli Garcia**  
Graduate Student,  
University of Texas

**Julie Puchot**  
USAA

**Margaret Schellenberg**  
Friends of CIS-SA

**Stacy Sampeck**  
3M-Acelity



**Communities In Schools of San Antonio surrounds students with a community of support, empowering them to stay in school and achieve in life.**





## Where We Serve

### 2022-2023 CIS-SA Program Sites

We served in over 200 schools across 13 districts in San Antonio and the surrounding areas.

#### Devine ISD

Mental health services only

#### East Central ISD

CAST LEAD  
East Central High School  
Harmony Elementary School Heritage Middle School  
Highland Forest Elementary School  
Legacy Middle School  
Oakcrest Elementary School  
Pecan Valley Elementary School  
Salado Elementary School  
Sinclair Elementary School  
Tradition Elementary School

#### Edgewood ISD

Kennedy High School  
Memorial High School

#### Harlandale ISD

Adams Elementary School  
Bellaire Elementary School  
Frank Tejada Junior High/Senior High  
Gilbert Elementary School Harlandale High School  
Harlandale Middle School  
Kingsborough Middle School  
Leal Middle School  
McCollum High School  
Terrell Wells Middle School

#### Judson ISD

Candlewood Elementary School  
Converse Elementary School  
Judson Middle School  
Kirby Middle School  
Park Village Elementary School Rolling Meadows Elementary School Wagner High School  
Woodlake Elementary School  
Woodlake Hills Middle School

#### North East ISD

Camelot Elementary School Colonial Hills Elementary School Krueger Middle School Montgomery Elementary School Roosevelt High School  
Walzem Elementary School Windcrest Elementary School  
White Middle School

#### Northside ISD

Anson Jones Middle School  
Boone Elementary School  
Cable Elementary School  
Coby Glass Elementary School  
Colonies North Elementary School  
Esparza Elementary School  
Excel Academy  
Glenoaks Elementary School  
Hobby Middle School  
Holmes High School

John Glen Elementary School

John Jay High School  
Martin Elementary School  
Mary Hull Elementary School  
McDermott Elementary School  
Meadow Village Elementary School  
Oakhills Terrace Elementary School  
Passmore Elementary School  
Pease Middle School  
Powell Elementary School  
Valley Hi Elementary School  
Villarreal Elementary School  
Westwood Terrace Elementary School  
Zachary Middle School

\*Additional sites served through SEEDS programs

#### Pearsall ISD

Mental health services only

#### San Antonio ISD

Advanced Learning Academy  
Arnold Elementary School  
Ball Academy  
Barkley Ruiz Elementary School  
Baskin Elementary School  
Beacon Hill Academy  
Bowden Academy  
Brackenridge High School  
Briscoe Elementary School  
Burbank High School  
Cameron Elementary School  
Carroll Elementary School  
Carvajal Elementary School  
CAST MED High School  
Cotton Academy  
Crockett Academy  
Davis Middle School  
DeZavala Elementary School  
Dorie Miller Elementary School  
Douglass Academy  
Edison High School  
Fenwick Academy  
Forbes Academy  
Foster Academy  
Fox Tech High School  
Gates Elementary School  
Graebner Elementary School  
Green Elementary School  
Harris Middle School  
Hawthorne Academy  
Herff Academy  
Highlands High School  
Hirsch Elementary School  
Hot Wells Middle School  
Huppertz Elementary School  
Japhet Academy  
Jefferson High School  
JT Brackenridge Elementary School  
Lamar Elementary School  
Lanier High School  
Longfellow Middle School  
Lowell Middle School  
Margil Elementary School  
Martin Luther King Jr. Academy  
Maverick Elementary School

Mission Academy  
Neal Elementary School  
Ogden Elementary School  
Pershing Elementary School  
Poe Middle School  
Rhodes Middle School  
Rogers Academy  
Rogers Middle School  
Sam Houston High School  
Sarah King Elementary School  
Schenck Elementary School  
Smith Academy  
Stewart Elementary School  
Storm Elementary School  
Tafolla Middle School  
Travis Early College High School  
Washington Elementary School  
Whittier Middle School  
Wilson Elementary School  
Woodlawn Academy  
Woodlawn Hills Elementary School  
Young Men's Leadership Academy  
Young Women's leadership Academy  
Primary/Secondary

#### Somerset ISD

Somerset Junior High School  
Somerset High School

#### South San ISD

Armstrong Elementary School  
Athens Elementary School  
Carrillo Elementary School  
Dwight Middle School  
Malda Elementary School  
South San High School  
West Campus High School

#### Southwest ISD

CAST STEM High School  
Legacy High School  
Southwest High School

#### Uvalde CISD

Batesville School  
Flores Middle School  
Uvalde Dual Language Academy  
Uvalde High School

#### Bexar County Juvenile Justice Academy

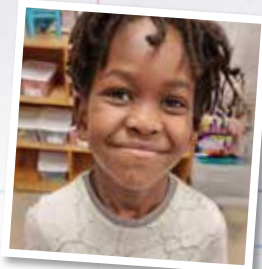
#### Haven for Hope

#### NXT Level Re-Engagement Center

#### Palo Alto College

#### San Antonio College

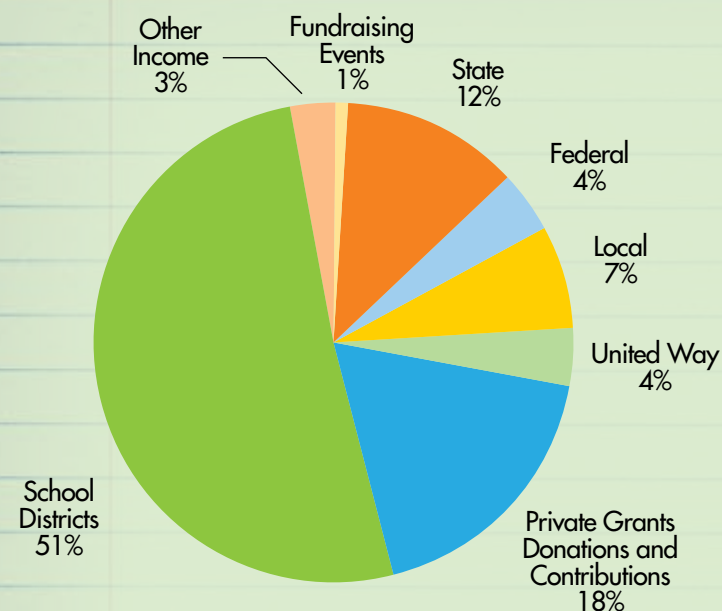
#### Specialty Courts



## Our Finances

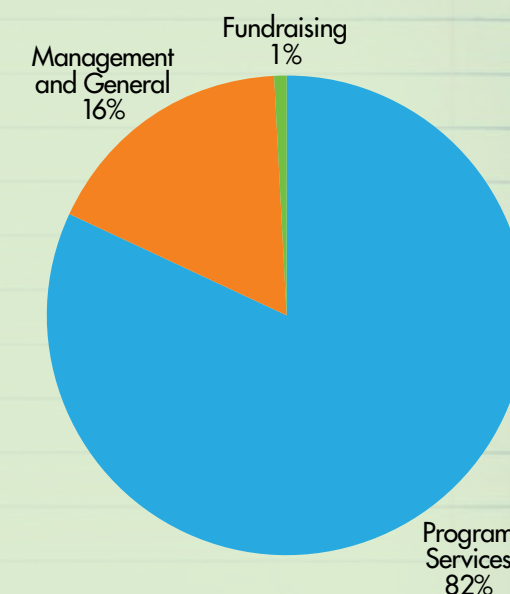
### Revenues

\$25,081,654



### Expenses

\$15,741,151



CIS-SA has a long history of clean audits. For audited financials, please visit [www.cissa.org](http://www.cissa.org)

## Supporting Students in Uvalde

After the tragedy at Robb Elementary School in Uvalde, we were there less than 24 hours later to help the community heal from the trauma, loss, and grief they collectively felt. As a result, during the 2022-2023 school year, we added Uvalde Consolidated Independent School District as a permanent district to our caseload.

### Our Team was comprised of:

- 1 Senior Site Coordinator
- 1 Site Coordinator
- 2 Licensed Mental Health Professionals

### Schools we supported:

- Batesville School
- Flores Middle School
- Uvalde Dual Language Academy
- Uvalde High School





## How We Serve

## Our Six Key Services



### Supportive Guidance

Through one-on-one workshops, team building, and guest speakers, we spent over **58,000** hours with students and provided **133,370** services to develop emotion regulation techniques, character education, social skills building, and conflict resolution.



### Academic Assistance

From providing students with tutors to finding creative, quiet spaces where students can study, our Site Coordinators spent **17,366** hours doing whatever it took to create an optimal learning environment for **6,376** students.



### Enrichment Activities

Our Site Coordinators enrolled **6,519** students in various in-school, after-school, and summer programs, field trips, and youth conferences to help them gain the experience essential to meeting college and career goals.



### Family Engagement

Our Site Coordinators connected **4,762** families with counselors and social workers to ensure the home is a healthy, nurturing environment where a student can feel safe.



### Basic Needs

A student cannot focus in the classroom if they are hungry, cold, tired, or can't see the board. Site Coordinators saw that **6,205** students' basic needs were met.



### Behavioral Interventions

Many of our students face and overcome challenging obstacles in their lives. Our Licensed Clinicians spent **9,275** hours teaching students positive ways to cope with anger, conflict resolution, and other strategies to keep them focused on school.

Data based on 11,432 case-managed students during the 2022-2023 school year.



# 134,684

students, teachers, or community members received CIS-SA services

# 92,148

students received CIS-SA support through school-wide initiatives

# 11,432

students received case management with 122,163 direct service hours

# 100%

 stayed in school

# 85%

 improved in academics, behavior, and/or attendance

# 98%

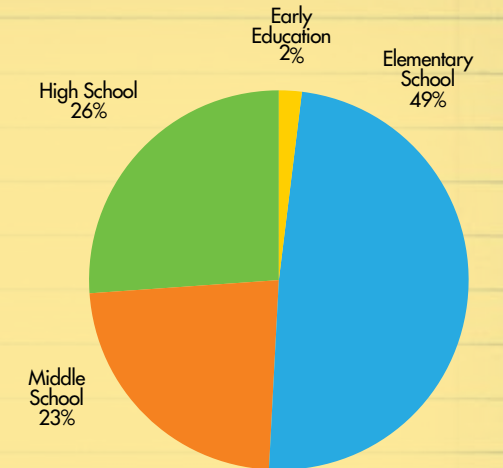
 were promoted to the next grade

# 98%

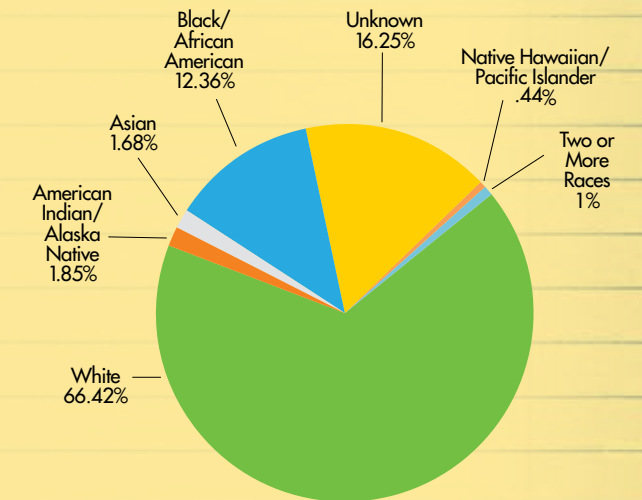
 of eligible students graduated

## Who We Serve

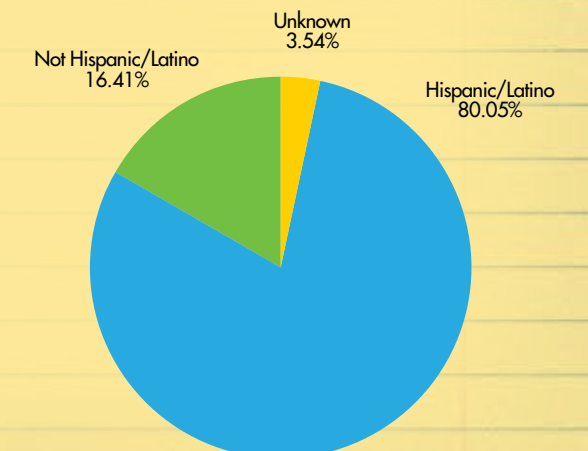
### Grade



### Race



### Ethnicity



All percentages reflect the results of our 11,432 case-managed students.



# Providing School-Based Mental Health Services

The various CIS-SA Clinical Programs are meant to fill a gap for our students and families in accessing professional mental health services. Many of the families we serve face barriers to accessing mental health services outside of the school setting. Our goal is to meet the needs of our families by providing services in the school setting to help students stabilize their mood and behaviors and be successful in and outside of school.



## Project Access

Provides all CIS-SA schools with short-term (8-10 sessions) intensive counseling services to students (and their families) enrolled in CIS-SA as case-managed students at their school.



## Metro Health Teen Parenting

Our clinical program dedicated to counseling and mental health support for pregnant and/or parenting teenagers in Northside ISD, Edgewood ISD, San Antonio ISD, South San ISD, and Southwest ISD. This program is in collaboration with the Metropolitan Health District.

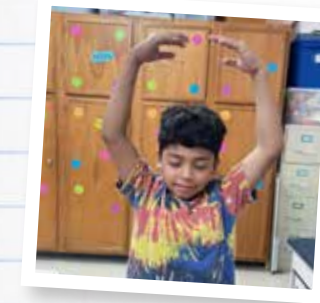
## Metro Health Domestic Violence

Our clinical program dedicated to providing counseling and mental health support to students and their families in Northside ISD, North East ISD, and San Antonio ISD who have been affected by domestic violence or have been referred by the Handle With Care program through the San Antonio Police Department.



## SEEDS

Each SEEDS team comprises a counselor and social worker who provides mental health services to students in Northside ISD that the district has referred. After counseling services have ended, the SEEDS team offers ongoing case management and supportive guidance services to the referred students and their families.



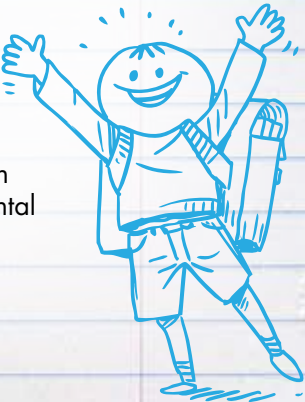
## Parent and Child Emotional Wellness Program (PACE Wellness)

A CIS-SA clinical program that provides mental health services to Head Start students by licensed counselors and social workers. This program promotes the school readiness of preschool-aged children and their families in San Antonio ISD.



## Basecampus

The Basecampus program collaborates with adult educators in East Central ISD and CAST Lead to provide education and support to educators, equipping them with the knowledge and skills to identify warning signs of mental health issues in students.



# Mental Health Outcomes



## Our Impact

1,223

students received mental health support, with 11,882 completed counseling sessions from our team.

208

Schools received mental health support across 13 school districts

92%

of parents received at least one session

85%

of students met their counseling goals

81%

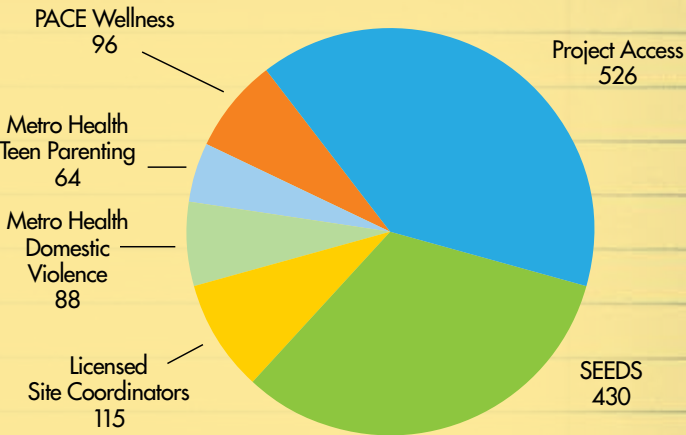
overall student improvement

75%

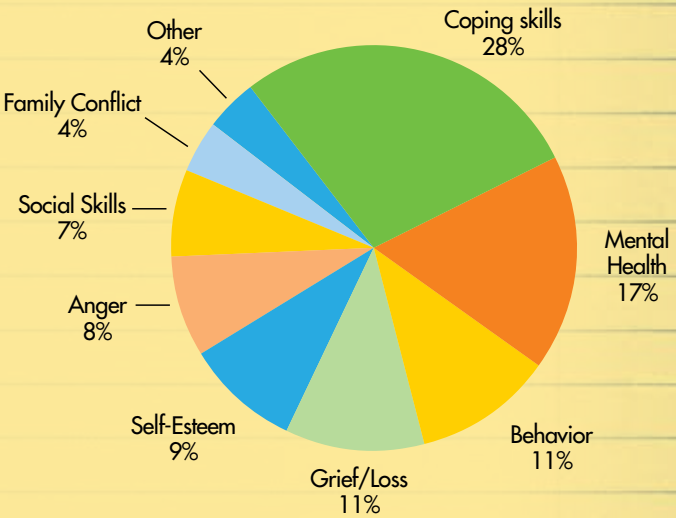
of students completed their treatment plan

All percentages reflect the results of the 1,223 students that received mental health support.

## Students served by program



## Student Identified Need



## Empowering Growth

A member of our Project Access Team supports her students with therapeutic interventions that help with coping, relaxation, and self-regulation skills. At the end of a particular set of sessions, she empowered one of her students to point out the key things they learned in therapy and recall skills to help them. The student made a mason jar filled with different pieces of colored paper. The pink paper represented their support system, the blue represented skills they learned, the green represented strengths about themselves, and the orange represented what they learned in therapy. The mason jar was filled to the top with different colored papers, representing growth. The student was empowered to recognize all those things on their own. They also painted a canvas to convey a positive affirmation and chose a flower growing that resembled their growth progress.



Student Success!



# Supporting Youth Through Specialized Services

CIS-SA provides specialized services to youth with unique needs through innovative strategies within schools and non-traditional spaces.



## Transition Site Coordinator

Embedded at Palo Alto College, our Transitional Site Coordinator provided services to **78** case-managed students as they navigated the challenges of college life to enhance student retention and persistence as they work toward achieving their post-secondary educational goals.

## Graduation Coaches

The Graduation Coaches provided comprehensive support in college, military, and career readiness services to **150** case-managed high school students in Edgewood ISD and Harlandale ISD. This initiative ensures a seamless transition to post-secondary pathways for at-risk youth, empowering them to shape their futures.



## Re-Engagement Coordinators

Our Re-Engagement Coordinators provided services to more than **800** students and their families across 17 schools in Northside ISD, and made **1320** visits to students at Palo Alto College and San Antonio College, encountering challenges that hinder their participation in staying engaged in their education. By identifying the obstacles to attending school, the Re-Engagement Coordinator provides the necessary support to re-engage them in their learning experience.

## Haven for Hope

The CIS-SA Education Coordinator embedded at Haven for Hope assisted **69** school-aged students experiencing homelessness, ensuring their school enrollment, access to educational opportunities, and social services to promote healthy behaviors, self-esteem, and academic success.

## NXT Level Youth Opportunity Center

A partnership between CIS-SA, the City of San Antonio, and Goodwill San Antonio, we worked to re-engage **766** "opportunity youth," those ages 16-24 who are not in school or engaged in the workforce to get them onto a path that's right for their future by assessing goals and creating action plans.

## Specialty Courts

Our Juvenile Specialty Courts Coordinator (JSCC) worked with **22** Bexar County Juvenile Probation Department students in Specialty Courts programs to address substance abuse, mental health, domestic violence, and school truancy.

## School Box of Trainings

These workshops included mental health-focused trainings for over **2,200** school-based staff and youth development professionals from **27** different organizations or schools to ensure greater numbers of the adults in our youths' worlds utilize a common framework to ensure healthy whole-child development.



## Re-Engaged into Learning

During her senior year of high school, Jessica received the Alamo Promise scholarship to pursue her post-secondary education. Life got in the way, and she stopped attending college. Our Re-Engagement team at Palo Alto College reached out to Jessica to see what they could do to connect her back into college. Jessica thought since she stopped attending school, she could no longer use her scholarship; Donna and Celeste let her know that wasn't the case. With their help, Jessica successfully re-enrolled at Palo Alto College. Donna and Celeste were able to provide additional resources, like food and bill assistance, to ensure she graduated with ease. Jessica is studying Biology and plans to focus on environmental protection.



Celeste, Donna, and Jessica

BIO



William and Leslie

## Overcoming Obstacles

William is in his second year at Palo Alto College and is ready to transfer to UTSA to complete his degree in social work! He is a veteran and overcame many obstacles to feel comfortable going to college. While on campus, our Transition Coordinator, Leslie, did a presentation on the services she provided, and William felt like she was talking to him. Leslie showed William that he did not have to be alone and she would be there to help him navigate this difficult journey. William grew in his confidence and became connected to many organizations on campus. He is now laser-focused on graduating and helping others just like his VA therapist and Leslie helped him.

*"Since I am a veteran and non traditional student, I didn't know what to expect starting at Palo Alto College. Immediately, I was embraced and taken in as one of the family, and it completely changed the way I viewed myself and my educational journey."*

- William



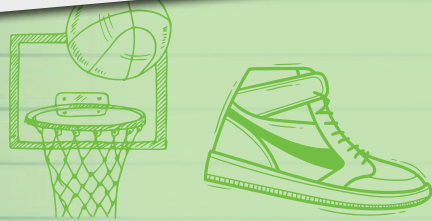


## Student Success

Our traditional model, mental health support, and special programs help our students to **connect**, **heal**, and feel like they **belong**.



Jacklyn, Manny, and Basketball Coach



### Connecting Students to Resources

Many students look forward to joining sports and playing alongside their peers. Often, it serves as a motivator to show up to school and do well. Our student, Manny, knew he needed to pass his classes if he wanted to play sports. He did that and more but faced an unplanned obstacle when he wasn't allowed to participate in basketball practice because he didn't have the correct shoes. Manny was disappointed and hated watching from the sidelines, but he understood it was a safety issue. Manny's coach contacted his mom, and she quickly **connected** with Jacklyn, CIS-SA Site Coordinator, for help. Jacklyn jumped into action and ordered Manny a pair of basketball shoes that he could wear on the court and a pair of tennis shoes that he could wear daily. When Manny saw the new shoes, he ran to Jacklyn and said, "I have been wanting this exact pair of tennis shoes for months. I am going to wear them every day!" Manny's mom couldn't believe how fast CIS-SA and Jacklyn **connected** her family to resources. In the future, Manny hopes to earn an athletic scholarship to attend college. His goals are to have incredible grades, work hard, stay motivated, and never be afraid to ask for help. We are there to support Manny and help his dreams come true.

### Positive Healing

Sadie began to struggle with panic attacks and daily anxiety. Right before the school year started, her home was struck by lightning, causing it to catch on fire. While the house wasn't a total loss, this caused her family to be displaced with relatives until it could be repaired. Sadie began to struggle with panic attacks, knowing that everyone at school knew what had happened. She couldn't seem to get away from the trauma she was experiencing daily. Our Site Coordinator, Amanda, began working with Sadie to help her **heal**. Aside from emotional support, Amanda provided the family with technology and gift cards to purchase food for the holidays. With Amanda's help, Sadie has become more of herself again. She feels confident and is trying to form healthy and positive relationships.



Amanda and Sadie

### A Place to Belong

Javier and Cecilia are brother and sister. Javier is in kindergarten. He is outgoing, very caring, and worries more about other people's well-being than his own. Cecilia is in 2nd grade and tends to be shy, but she also puts others before herself. The siblings both had some challenges interacting with their peers, making friendships, and feeling like they **belong** but for different reasons. Javier was very outgoing but struggled to interact with students his own age. Cecilia was very quiet and shy, struggling to open up to those around her. Their Site Coordinator, Salma, started working with both students in groups to develop social skills and individually as a shoulder to lean on and help in their interactions. Since working with the siblings, Salma has seen them improve in their social interactions with not only their peers but also with adults on campus. They have opened up, are outgoing, and have a positive mindset.



Cecilia and Javier

## Surrounding Students with a Community of Support

We couldn't do the work we do in schools without the help of our partners and volunteers.

268

**Community partners** extend beyond conventional support. Their commitment to providing essential resources, from mental health support groups to basic needs, financial literacy programs, art initiatives, and more, reflects our dedication to community-based resources catering to each student's needs.

798

**Volunteers** made a difference in the lives of our students by participating in either a one-time or ongoing volunteer opportunity. Some of the opportunities include individual and workplace mentoring, tutoring, pen pal, job shadows, reading days, organizing a drive, holiday happiness, Stuff The Bus school supply drive, being a guest speaker, etc.



95

**InspireU volunteers** from **7** businesses served **120** students around San Antonio, creating one-on-one relationships with our high school students through a mentorship program and the exploration of real workplace environments and engaging in activities that prepare them for their future careers. Participating companies included AT&T, Broadway Bank, CPS Energy, Frost Bank, H-E-B, The Hartford, and USAA.

2,600+

Students and families participated in **STEM Family Nights**. Funded by the Texas Research & Technology Foundation (TRTF), these are interactive education events that offer the chance to engage in hands-on academic activities. These STEM stations are designed for elementary and middle school students to advance STEM career pathways and enhance family involvement of STEM education.



Funded by the OneStar Grant, CIS-SA AmeriCorps Members pursuing bachelor's or master's degrees in fields related to social work, counseling, and more through partnerships with local and online universities provide personalized support to 5 to 10 case-managed students, facilitate group activities to address common obstacles, and help strengthen CIS-SA's capacity to implement our integrated student support model.



53

**AmeriCorps Members.**

41

**schools supported by AmeriCorps Members.**

1,418

**students received additional support from AmeriCorps Members.**

5,352

**hours dedicated to enhancing our organization's capacity.**

14

**AmeriCorps Members graduated and became full-time CIS-SA staff.**



Thank you to our Friends of CIS-SA for being All In for Kids!"

102

**Friends of CIS-SA Members**

551

**Students supported through enrichment activities funded by Friends of CIS-SA**

18

**Friends of CIS-SA Pen Pals at Cable and Gilbert Elementary Schools**



## ALL IN for Kids

Our signature annual events unite the community to advance our mission.

### Equipping Students with School Supplies

Through our Stuff The Bus School Supply Drive in partnership with H-E-B, KENS5, and iHeart Media, we had **114** partners spend their summer collecting supplies and/or raising funds for our kids. Collectively, we raised approximately **\$284,290** in funding and in-kind gifts to ensure that all students' backpacks were stuffed with the tools they needed to start the school year off right. Extra school supplies are also kept in the Site Coordinators' offices for any student on campus to access throughout the school year.



### WHOLE CHILD WHOLE COMMUNITY CONFERENCE



On November 3, 2022, non-profit leaders, youth-serving staff, educators, counselors, and community leaders gathered for the 2nd annual Whole Child Whole Community Conference hosted by CIS-SA in partnership with UTSA. Over **215** participants learned how to build a stronger network of support for our youth and encourage connection, healing, and belongingness. Sessions at the conference included Promoting Positive Identity Development, Trauma Informed Sports & Coaching, and School-Community Collaboration to Address Mental Health Needs: Pitfalls and Recommendations.

### Keeping Kids in School Luncheon

The CIS-SA Keeping Kids in School Luncheon is a fundraising event for the agency, and the event's success is due to the community of support from generous CIS-SA donors. This event was held on May 18, 2023, and allowed us to raise over **\$97,000** for our students.

The luncheon was sponsored by Valero Energy Foundation, along with 42 other sponsors who were equally showing their commitment to supporting our students. Save the date for our Friday, May 17, 2024, luncheon!



## Thank you for your support!

The generosity, passion, and commitment of our donors are truly undeniable. Thank you to all of our individual donors, organizations, and foundations who help fund our mission which allows us to serve students and families across San Antonio.

**Below you will find a list of generous organizations that have supported us this past year.**

- |  |  |
|--|--|
| 3M   | Marcia and Otto Koehler Foundation               |
| Adam R. Scripps Foundation                           | Mathis Consulting Services, Inc                  |
| Alamo Colleges                                       | North Texas Community Foundation                 |
| Amerigroup Corporation                               | Northside Lions Charitable Foundation            |
| Ameritas Group                                       | Omega Psi Phi Fraternity Inc.- Psi Alpha Chapter |
| Bank of America Charitable Foundation                | One Star Foundation                              |
| Beldon Family Foundation                             | Palo Alto College                                |
| Bexar County   | Port San Antonio                                 |
| Berkshire Hathaway HomeServices,                     | PwC Charitable Foundation                        |
| PenFed Realty and Federal Credit Union               | QVC  |
| Broadway Bank  | Rackspace Foundation                             |
| Catto & Catto, a division of HUB International Texas | Randolph Brooks Federal Credit Union             |
| Cavenders Cares                                      | RKV Architecture                                 |
| City of San Antonio                                  | Rodriguez Trial Law                              |
| Coldwell Banker D'Ann Harper Realtors                | RSM  |
| City of San Antonio, San Antonio Metropolitan        | San Antonio Area Foundation                      |
| Health District                                      | San Antonio River Authority                      |
| Compassionate SA and Compassionate USA               | Schrive Carmona                                  |
| Cowden Charitable Foundation                         | Shield-Ayres Foundation                          |
| CPS Energy   | Simmons Bank                                     |
| DOCUation  | Simple Generosity                                |
| Enterprise   | South Texas Vocational Technical Institute       |
| Ernst & Young  | SPR Family Charitable Giving Fund                |
| Firstmark Credit Union                               | Spurs Sports & Entertainment                     |
| Food Safety Net Services                             | St. Luke's Lutheran Health Ministries            |
| Frost Bank   | St. Mark's Episcopal Church                      |
| Generations FCU                                      | Stantec  |
| Greater Houston Community Foundation                 | TEGNA Foundation (KENS-5)                        |
| (Silver Eagle Beverages)                             | Texas Education Agency                           |
| H. E. Butt Foundation                                | Texas Research and Technology Foundation         |
| Hambisana IT LLC                                     | The Beacon Fund                                  |
| HCA Healthcare                                       | The Boeing Company                               |
| H-E-B  | The Najim Charitable Foundation                  |
| H-E-B Tournament of Champions Charitable Trust       | Toyota Motor Manufacturing Texas                 |
| Hixon Properties Charitable Foundation               | Tres Grace Family Foundation                     |
| Hogg Foundation                                      | Trinity University                               |
| Hudson Group   | UPS STORE 5234                                   |
| IBC Bank   | United Way of San Antonio and Bexar County       |
| Intervene K-12                                       | USAA   |
| Jefferson Bank                                       | Valero Energy Corporation                        |
| Just Keep Livin Foundation                           | Valero Energy Foundation                         |
| Kilpatrick Memorial                                  | VIA Metropolitan Transit                         |
| Kirkland & Ellis LLP                                 | Western Dental (Brident)                         |
| Las Aguilas  | Whataburger                                      |
| Lifelong Learning Administration Corporation         | Wyatt Family Foundation                          |
| Lowe Foundation                                      | Wyatt Law Firm                                   |
| Marathon Petroleum                                   |  |

\*Organizations who have given \$1,000+ from May 2022 through August 2023.





# THANK YOU



**SCAN ME**  
to visit our website



**Communities  
In Schools®**

San Antonio

**We appreciate your support!**

To learn more about our students please visit

**[www.cissa.org](http://www.cissa.org)**  
**(210) 520-8440**



1045 Cheever Blvd. Suite 201, San Antonio, TX 78217